

55  
YEARS

Thomashilfen

PIONEER  
SINCE 1969

RECA

**New: The successor to the  
RECARO Monza Nova Reha**  
Tested in accordance with the new  
Safety standard R129  
(Seat & accessories)  
including side impact protection!



**100 - 150 cm**  
**39.4" - 59.1"**  
**15 - 36 kg**  
**33 - 79.4 lbs**

Unique flexibility-promotes individual  
mobility and improves perception

**RECARO Monza CFX Reha**

  
Thomashilfen

# RECARO MONZA CFX REHA

**RECARO** &  **Thomashilfen**

## Strong together for the safety of your child

For over 35 years, Thomashilfen has been working with renowned partners such as RECARO to develop rehab car seats that offer optimum protection for children with special needs. These many years of experience are incorporated into the design of our products to ensure maximum functionality, comfort and safety.

RECARO stands for innovative safety technology and quality that regularly exceeds legal standards and convinces parents worldwide. Our common mission:  
To ensure the safety and well-being of your child at all times.



Thomashilfen has been supplying special children with rehab car seats for over 35 years. Today, we also use our expertise to develop our own rehab car seats. They incorporate all our many years of experience in meeting the needs of children and parents.



*Gunnar Thomas, owner*

Pioneer

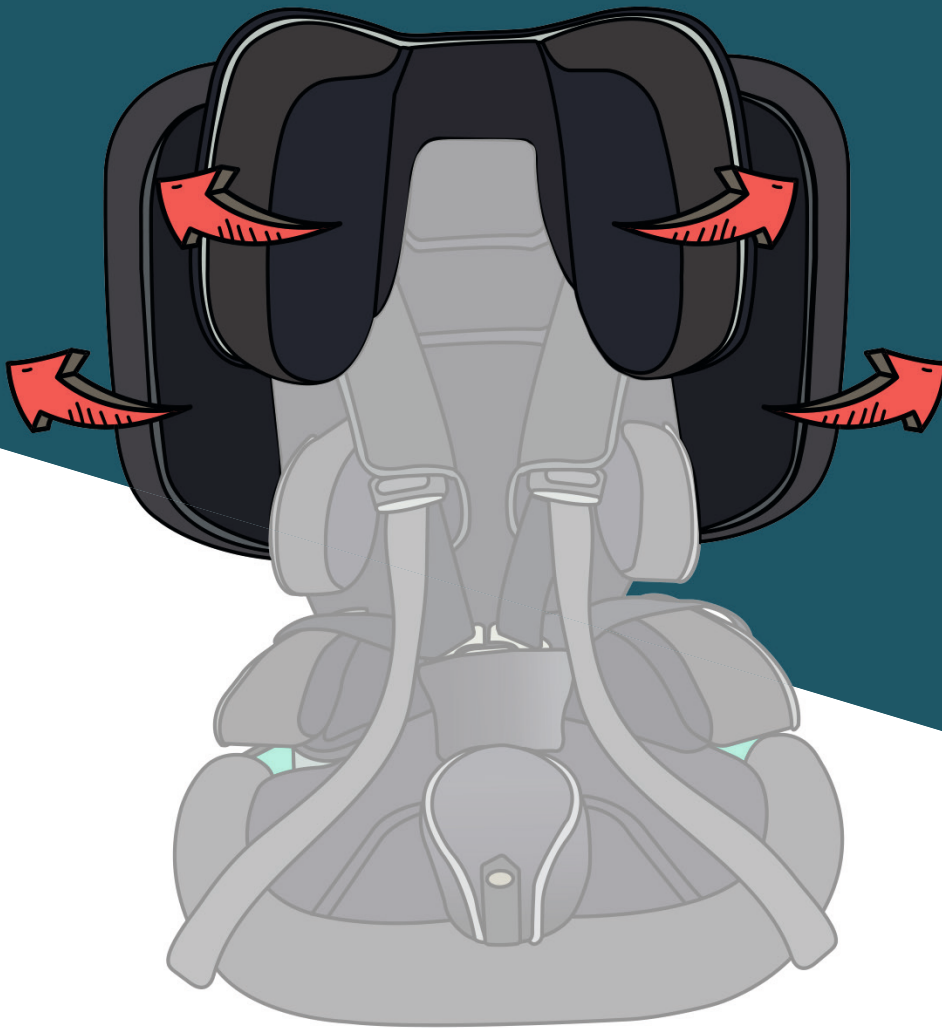
**REHAB CAR SEATS**

since  
1988

*Thomashilfen has the world's largest range of rehab car seats and offers the right support for all ages and disabilities.*

## Unique mobility:

The movable side wings enable a flexible shoulder area that allows natural movements. This adaptation promotes individual mobility and improves children's perception.



- ◆ **Maximum safety:** The specially shaped pads and the integrated 5-point positioning belt ensure that children sit safely and comfortably in an upright position without losing support.
- ◆ **Individual adjustment** thanks to the integrated velcro back plate for customized solutions
- ◆ The **multifunctional base** (accessory) with seat tilt-in-space relieves the child when sitting upright becomes too strenuous.

# RECARO MONZA CFX REHA



The basic rehab configuration can optionally be equipped with suitable swivel base and tilting base



The SWIVEL BASE and TILTING BASE can be supplemented with a wide range of accessories if required.

The release lever is conveniently located on the side of the swivel base for easy handling. It can be ordered for right or left-hand rotation.



**1. ERGONOMIC HEADREST**

Offers optimum neck support. It can be adjusted to the child's current size in seconds.

**2. MOVABLE SIDE WINGS**

The seat width expands automatically and adapts to the child's height.

**3. LATERAL TRUNK SUPPORT**

Precise support of the upper body without restricting the user's freedom of movement.

**4. COMFORT SEAT FOAM**

Adapts specifically to the individual body shape of the user and thus offers a particularly comfortable and supportive surface that minimizes pressure points and ensures comfort in every position.

**5. RAISED ARMRESTS**

The raised armrests improve the safety-belt direction, offer better protection in the event of a side impact and optimize the safety of the child.

**7. ISOFIX-CONNECTORS**

Quick and easy installation. Safety indicator in green/red for correct anchoring.

**AIR VENTILATION SYSTEM**

No sweating thanks to the air circulation system.

**100 - 150 cm**  
**39.4" - 59.1"**  
 User height  
**15 - 36 kg**  
**33 - 79.4 lbs**  
 User weight



# RECARO MONZA CFX REHA

## Functions (selection)



Movable side wings automatically adjust to the child's height and thus provide sufficient space without compromising safety.



An integrated 5-point harness keeps even older children in an optimal sitting position.



Fixed lateral trunk supports can be positioned precisely on the back plate thanks to velcro fastening - without restricting the child's freedom of movement.

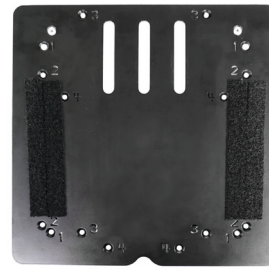


Ergonomic, 10-position-height-adjustable headrest, grows step by step with the child.



- The innovative high-tech base expands the car seat with a variety of functions, such as a swivel base, a tilt base, or a combination of both. This flexibility enables easy adjustment and increases comfort and safety for the child significantly.

## HIGH-TECH COMBINATION



**ADAPTER PLATE -**  
is **ALWAYS** required  
for the following  
accessories:



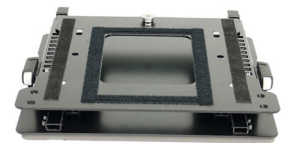
**SWIVEL BASE**  
makes transfer easier,  
conveniently accessible  
release lever can be ordered  
for right or left rotation.



**TILTING BASE**  
allows seat tilting in  
4 stages (2.5°/5°/7.5°/10°)  
for a relaxed resting  
position.



**TILTING BASE AND  
SWIVEL BASE**  
combined for the best  
possible handling  
and comfort



**FOOTREST SUPPORT**  
FITTING with or  
without SEATFIX



**FOOTREST**  
ensures a stable seating  
position, allowing the  
child to brace their  
feet firmly.



**STAND FRONT,  
SEATFIX-ADAPTER OR  
STABILIZING BOW**  
ensure stable support  
of the seat in the car.



**ABDUCTION BLOCK**  
(adjustable) improves leg  
control and prevents the legs  
from crossing.

## ▶ ACCESSORIES (SELECTION)



**TABLE, ANTERIOR SUPPORT** promotes the child's upright and stable posture, gives the child all-round support and security.



**SEAT WEDGE (BELOW)** allows a +10° seat tilt.



**SEAT DEPTH EXTENSION** offers more leg support and individual adjustment for tall children.

A complete overview of accessories can be found on the online order form.

Dimensions & Weights	RECARO Monza CFX Reha
<b>Seat depth</b> (behind crotch strap)	22 cm / 8.7"
<b>Seat depth</b> (behind front edge)	33 cm / 13"
<b>Seat width</b>	27 cm / 10.6"
<b>Back height</b> (seat inside)	74 cm / 29.1"
<b>Shoulder height</b> (harness guide)	31 - 51 cm / 12.2" - 20.1"
<b>Shoulder width</b>	35 - 45 cm / 13.8" - 17.7"
<b>Seat tilt</b> (base model)	2,5° / 5° / 7,5° / 10°
<b>Overall dimensions</b> (w x h x d)	45 x 65 x 40 cm / 17.7" x 25.6" x 15.7"
<b>Weight of the seat</b>	8,5 kg / 18.7 lbs
<b>User height</b>	100 - 150 cm / 39.4" - 59.1"
<b>max. user weight</b>	36 kg / 79.4 lbs

### Basic equipment:

Seat and backrest with 10-position height-adjustable headrest; integrated 5-point harness; crotch pad; removable head, thorax and seat side supports; abduction guide seat side pads; abduction block, movable side wings, Velcro fastening in the back, ISOFIX connection, removable covers, machine washable up to 40°C

Watch the video:  
How quickly and easily the RECARO Monza CFX Reha is installed in the car.



Member of the International Support Association for the Rehabilitation of Children and Youths e.V.

[www.rehakind.com](http://www.rehakind.com)

**KINDER REHA 24**

[www.kinderreha24.de](http://www.kinderreha24.de)



Axxid ONE 2 Reha (Reboarder)

61 - 125 cm  
24.0" - 49.2"



AVOVA Sperling Reha

76 cm - 135 cm  
29.9" - 53.1"



Axxid NEXTKID Reha

100 cm - 150 cm  
39.4" - 59.1"



Recaro Monza CFX Reha

100 cm - 150 cm  
39.4" - 59.1"



Hercules Small

100 - 150 cm  
39.4" - 59.1"



Hercules Prime

130 - 180 cm  
51.2" - 70.9"

You can find the entire range of rehab car seats at [www.thomashilfen.com](http://www.thomashilfen.com)

**Thomashilfen**

Thomas Hilfen für Körperbehinderte GmbH & Co. Medico KG · Walkmühlenstraße 1 · 27432 Bremervörde · Germany  
Phone: +49 (0)4761 886-63 or -68 · Fax: +49 (0)4761 886-19 · [www.thomashilfen.com](http://www.thomashilfen.com)